

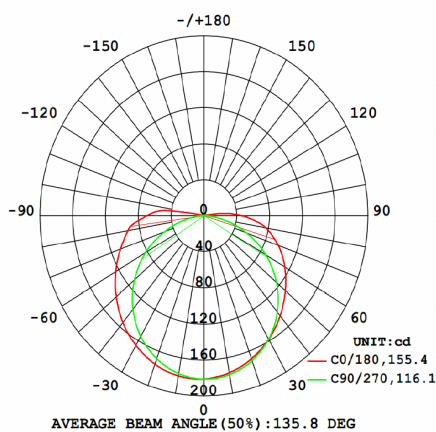
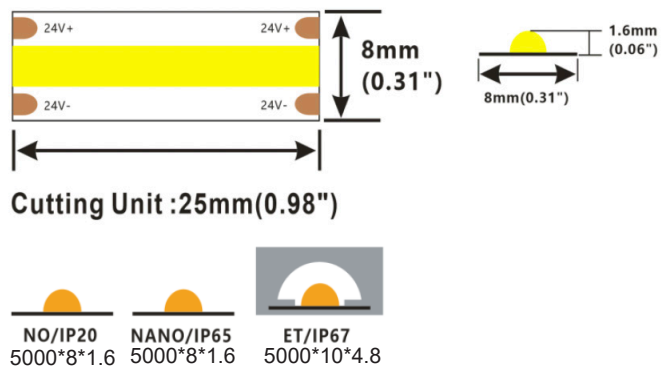
13-6527 6530 6540 COB LEDFLEX OUT CL 927 - 930 - 940 5M



- Light line with big emitting angle
- CRI>90,85LM/W@4000K
- Suit for furniture lighting and decorative lighting application

1. Specifications

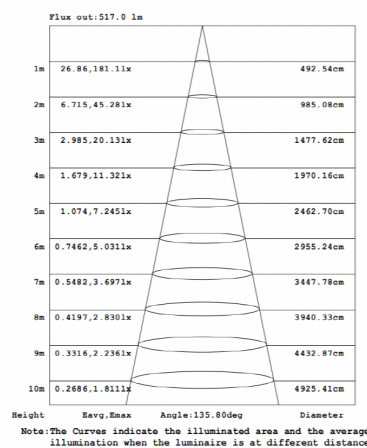
- Max length: 5000mm
- Cutting unit: 25mm
- Min bend diameter: 60mm
- IP65
- Warranty: 3years



Photometric of 1M (4000K) strip

※Max.length data is based on 10% voltage drop

※Warranty is based on indoor use



AAI Figure

LEDsGO BVBA

Drieslaan 6 | B-8560 Wevelgem (Moorsele) | Tel +32 (0) 56 424 992 | Fax +32 (0) 56 435 707

BTW BE 0824.326.685 | ING IBAN BE47 3630 7083 3480 | BIC BBRUBEBB

2. Electronic & output data

INPUT voltage: DC24V

Rated current: 0.33A(1m) /1.46A(5m)

TYPICAL Power: 8W(1m) /35W(5m)

CRI: 90

Max.power: 9W

On-off times: 10000 (test times)

Power range: 7 ~ 9W

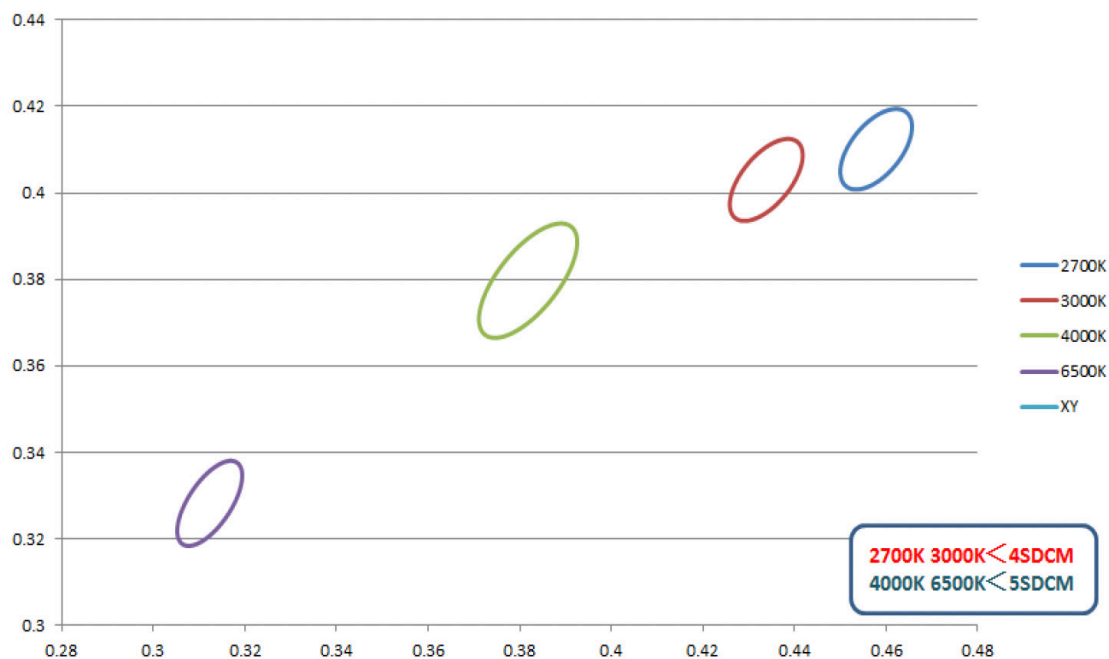
Copper foil: 3oz

CRI	Color	CCT	Lumen(lm)	lm/W	Energy efficiency class
Ra>90	SW	2700K	630	79	A+
Ra>90	WW	3000K	640	80	A+
Ra>90	NW	4000K	660	83	A+

- 1.The tolerance of output data can be vary up to 15%
- 2.the output data tested according to IES TM-30-15
- 3.the output data is based on IP20/1merter, data of 5m in only for reference
- 4.IP protection process leads changes to size, CCT and luminous flux

Lumen output rate for IP65 = 98%

3. Binning



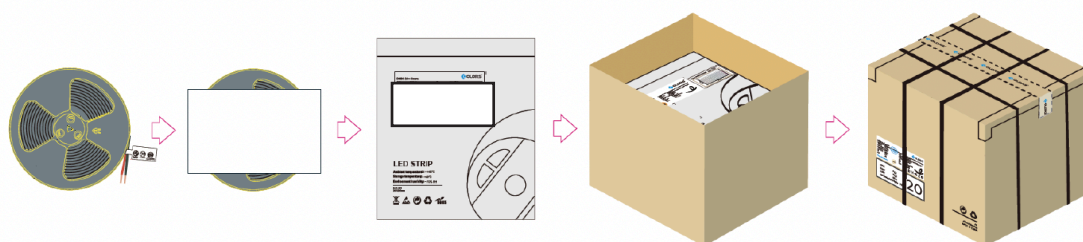
LEDGO BVBA

Drieslaan 6 | B-8560 Wevelgem (Moorsele) | Tel +32 (0) 56 424 992 | Fax +32 (0) 56 435 707
BTW BE 0824.326.685 | ING IBAN BE47 3630 7083 3480 | BIC BBRUBEBB

4. Packing

IP Process	Product size(mm)	Product quantity (m/reel)	Product quantity (m/case)	Product net weight(kg)	Net weight per box (kg)	Gross weight (kg)	Package size (mm)
IP65	5000*8*1.6	5	300	0.13	7.8	8.97	410*410*260

Remark: data with 10% tolerance



5. Precautions

- Please drive the led strip with 24VDC isolated power, and the ripple of the constant voltage source should be less than 5%.
- Please do not bend the strip into an arc with a diameter less than 60mm to ensure the longevity and reliability.
- Do not fold it in case any damage of LED beads.
- Do not pull the power wire hard to ensure the longevity. Any Crash may damage the LED light is prohibited.
- Please make sure the wire is connected to the anode and cathode correctly.
- The power output should be consistent with the voltage of the strip to avoid damage.
- LED lights should be stored in dry, sealed environment. Please only unpack it before usage. Ambient temperature: -25C~40C. Storage temperature: 0C~60C. Please use the strips without waterproof within indoor environment with humidity less than 70%.
- Please be careful during operation. Do not touch the AC power supply in case of electric shock.
- Please leave at least 20% power for the power supply during using to ensure there is enough power supply to drive the product.
- Do not use any acid or alkaline adhesives to fix the product (e.g.: glass cement).

LEDSCO BVBA

Drieslaan 6 | B-8560 Wevelgem (Moorsele) | Tel +32 (0) 56 424 992 | Fax +32 (0) 56 435 707
BTW BE 0824.326.685 | ING IBAN BE47 3630 7083 3480 | BIC BBRUBEBB